

# PBCH Newsletter August, 2017

Page 1

Issue No. 8

Tails and Trails



## Calendar of PBCH events/meetings

### August

**August 16 Wednesday Monthly Meeting** Dalton Garden City Hall. 6360 4<sup>th</sup> St. Socialize at 6:30 and meeting starts at 7 p.m.

**August 27 Sunday Fun Ride** Bernard Peak Overlook. Two-hour 45 minute-ride. Bring a lunch or snack. Members only. Some climb but nice wide trail system. Foot in stirrup 9 a.m. Directions: Head east on Hwy. 54 from Hwy. 95. At first traffic circle go right on Good Hope Rd. Then go to Hellroaring Rd on left. Follow to end of road cul de sac. Lots of parking. Will ride to the overlook. Some climbing, horses should be shod. Ride through the forest. See more information on web site under Maps/Directions. Julie Volpi trail boss email [charlieandjulie01@gmail.com](mailto:charlieandjulie01@gmail.com)

### September

**September 9 Saturday** On September 9 the Dalton Picnic will take place which entertains and feeds over 300 people. The city makes hamburgers and hotdogs and then most people bring a dish or desert to share. For the past few years our PBCH members have helped to serve the food. We do this to show our appreciation for the use of our meeting room at the Dalton City Hall It is a fun time, not hard work and everyone who has helped has enjoyed doing it. We do need several volunteers so I am asking members to help out. We need to be at the city hall from 11:00 - 2:00. Let me know if you would like to volunteer or just come to the next chapter meeting to sign up. This is a good chance for people who can't do trail work to help out in another way. Karen Kimball 208-699-5268.

Calendar continued page 3

## Information Corner

Newsletter Editor Joni Lueck  
Email [jklhorserider@gmail.com](mailto:jklhorserider@gmail.com)

\*\*\*\***On Loan:** The club has a Decker pack saddle and boxes it will loan out to members.

Please go to [www.pbch.org](http://www.pbch.org) and print out 2017 **membership form** and mail in. Please email Susan Purdy, treasurer [finegansfarm2@gmail.com](mailto:finegansfarm2@gmail.com) with questions. You can also sign up at any ride or event throughout the year! Mail to PBCH, P.O. Box 1903, Hayden, ID 83835.

Remember to get your PBCH membership card which is good for **10% discount** on animal feed at the North 40 Store. Attend the monthly meeting to pick up your discount card.

**Life Flight memberships.** The yearly dues are \$55 for BCHI members. Important to have in case of medevac emergency during trail riding or other events.

### 2018 Calendars are Available!!

Contact Bill or Kay Clarke at 208-699-2044 or 687-2784 to purchase yours for the upcoming year. These are a main fundraiser for the BCHI organization. \$20 for the calendar and entry of the drawing raffle card for one of 12 prizes.

### Business Card Sponsorships

The sponsorships help the chapter's bottom line. They are inexpensive for members at \$10 per year. Non-members can become a sponsor also for \$30 per year. This includes your business card in the monthly newsletter Tails and Trails and also your card will be listed on the web site. This is a great price for advertising!

**PBCH, P.O. Box 1903, Hayden, ID 83835.**

## 4<sup>th</sup> of July Rec Area Archive Photo



Photo courtesy Joni Lueck.

This was a photo from 6 years ago when the chapter put on a hamburger feed and fun ride that was open to the public.

## Bernard Peak Fun Ride



Photo courtesy Cindi Richardson.

Matt Richardson and his handsome black gelding take in the view at Bernard Peak Overlook. Three people including Julie Volpi, Cindi and Matt Richardson completed the 2 ½ hour ride earlier this summer. It was a beautiful day and great view of Lake Pend Oreille from horseback. The next fun ride here is August 27 at 9 a.m. Julie Volpi trail boss. [Charlieandjulie01@gmail.com](mailto:Charlieandjulie01@gmail.com)



## **Wilderness Designation Fact Finding Meeting**

By Jerry Shriner

The Scotchman Peaks roadless area is 88,000 acres of boreal forest, rugged mountains and some of the most stunning views in North Idaho. The area spans the Idaho/Montana border north of the Clark Fork River near Clark Fork, ID. At the behest of Senator Risch, his staff and several state and federal employees held a fact finding meeting in Clark Fork two weeks ago addressing the question of “Should the Scotchman’s Peak area be designated a wilderness area?”

Alan Harper, Diane & I attended and had the opportunity to interact with the Senator’s staff and several agency representatives as well as several dozen citizens who came to render opinions and ask questions. All participants were urged to put their views in writing with the data going to Senator Risch’s office for compilation.

Google Scotchman Peaks for some pictures and to find out more about them. If you want to voice an opinion about the wilderness proposal contact Senator Risch’s office.

---

Calendar continued from Page 1

**Heyburn State Park** overnighiter and fun ride September 15-17th. Camping will be at the new South Side camp area. Stan and I will be at the camp site Friday night and Saturday night with the barbecue. Will do potluck on Saturday night about 5:00 pm. We will do a longer ride on Saturday, and have a shorter ride on Sunday. Rides will start at 10:00 so people can get up to the site.

Any questions you can call Jamie at [208-755-4490](tel:208-755-4490). or Email at [jkimball2331@yahoo.com](mailto:jkimball2331@yahoo.com)

**September 24 Sunday. Antoine Park fun ride**, Conservation Area in Washington. 9:30 a.m. Three-hour ride. Bring a lunch. Trent Ave. then North onto Campbell Road. Go approximately 2 miles to the trailhead parking. Follow PBCH signs. Email [codeysophie@hotmail.com](mailto:codeysophie@hotmail.com)

**Riverside State Park** overnighiter and fun ride Sept 30.

**September/ October**

Steak Ride to be determined.

DAVE LOGUE  
President

**Selkirk  
Aviation  
Inc.**

JONI LUECK  
Vice-President

FAA Repair Station #LOGR640X

*Specializing In Fiberglass Aircraft Parts*

email: selkirkav@selkirk-aviation.com

www.selkirk-aviation.com

(208) 664-9589

Voice Mail 1-800-891-7687

3377 W. Industrial Loop

Coeur d'Alene, ID 83815

BRINGING HOME  
THE DREAM



**SCOTT BENGFORT**

SALES REPRESENTATIVE

SBENGFORT@LIVE.COM

CELL 208-964-0755

OFFICE 509-818-3921

FAX 509-891-2251

23801 E APPLEWAY

SUITE 130

LIBERTY LAKE, WASHINGTON 99019

REVEEXTERIORSLLC.COM

WA LIC # REVEEEL889KD

IDAHO LIC # RCE-39699

**2017 PBCH Officers and board members:**  
**Karen Kimball, president 772-2434; Arnie Wilkens, vice-pres. 755-2193;**  
**Arnie Wilkens, secretary 755-2193; and Susan Purdy, treasurer, 772-4210.**  
**Board members: Bob Funke 660-7919; Bill Clarke 687-1968;**  
**Ray Heilman 660-2907; and Jill Graham, 660-5549.**  
**Karen Kimball, public lands coordinator, 772-2434.**  
**Joni Lueck, newsletter editor, 659-9066.**

## Red Ives Trail Cleanup



Photo courtesy Karen Kimball  
Linda Funke holds stock while others work in the brush.

**McKINLAY & PETERS**  
EQUINE HOSPITAL

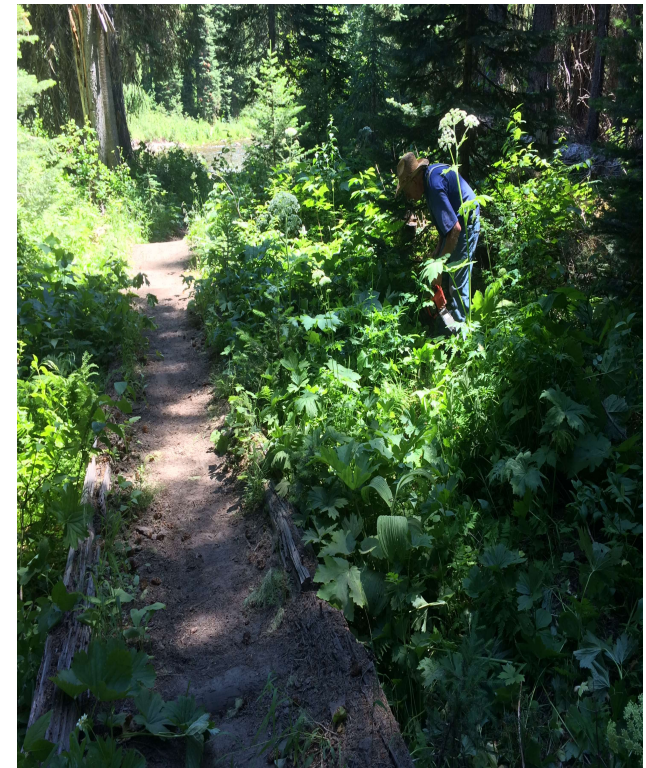
Bob Peters, DVM

(509) 928-6734 (MPEH)

www.mckinlaypetersequine.com



## Red Ives Camp and Work Project July 15-16



By Karen Kimball

**Bob and Linda Funke and myself drove up to Red Ives on Thursday July 13. On Friday morning we left the campground and rode up river to clear brush away from the puncheon. The rotten timber will be replaced next year and will be easier with the brush gone from around them. We worked all afternoon before heading back to camp. Jerry and Diane Shriner were at the campground when we got back. We all had a good dinner together. Next morning we road out a 9:00 am and headed up river to Broken Elbow Trail which connects at the top of the ridge with Line Cr Trail to make a loop. We started out clearing the trail which had not been done for two years. About ever 75 feet there was a down fall or two and the guys would have to pull the chainsaws out and cut. Halfway up the mountain a storm blew in and we had a few close lightning strikes go by, a little rain to cool us off and then clear weather the rest of the day. We got to the top and halfway across the ridge, it was now 6:30, and decided to stop cutting. We didn't want to be riding out in the dark and we had to get to Line Cr. Trail and then ride down the mountain. We reached the campground at 8:30, watered and feed the animals and all went to bed. Some went without any dinner. Bob and Jerry worked real hard cutting logs. The ladies helped with clearing logs and brush away and talking care of the riding and pack animals. I want to thank all that went and for the hard work they did.**

